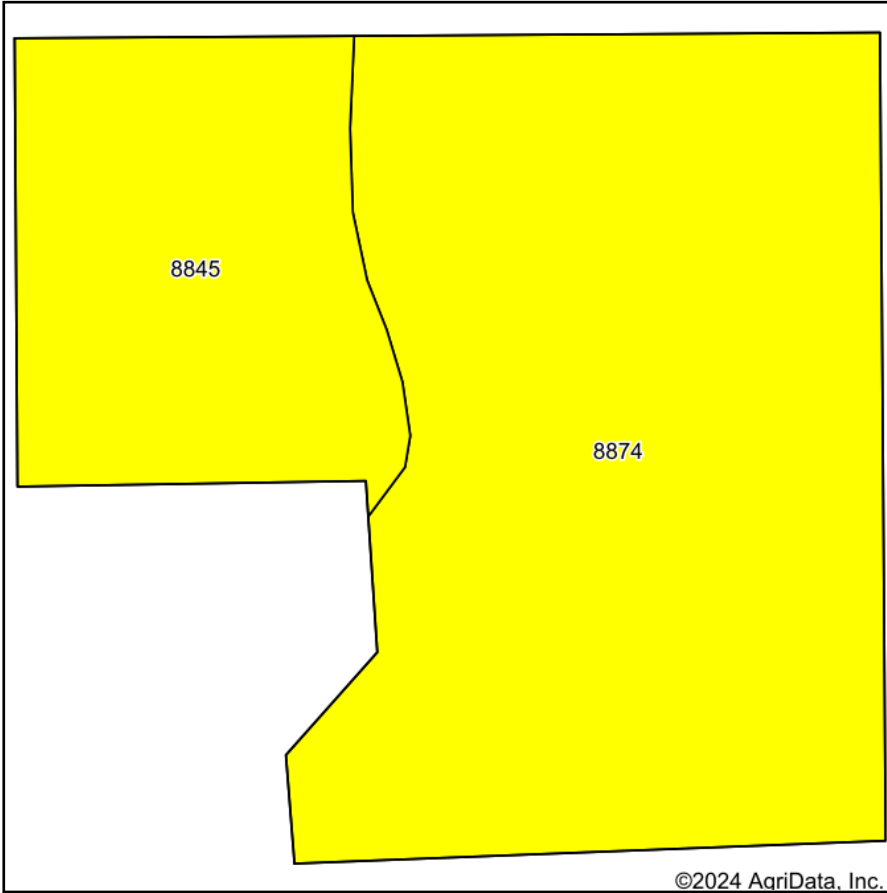
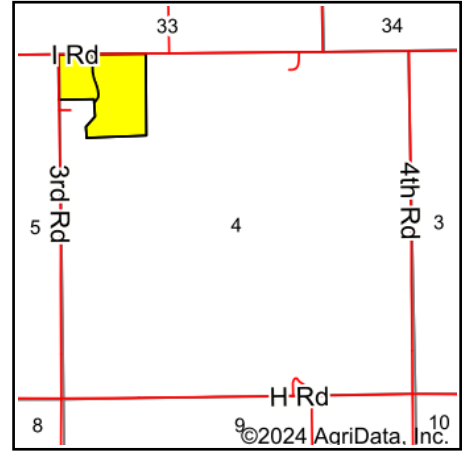


Soils Map



Soils data provided by USDA and NRCS.



State: **Nebraska**
 County: **Merrick**
 Location: **4-12N-8W**
 Township: **Vieregg**
 Acres: **31.69**
 Date: **9/4/2024**



Maps Provided By:



Area Symbol: NE121, Soil Area Version: 23

| Code | Soil Description | Acres | Percent of field | SRPG Legend | Non-Irr Class *c | Irr Class *c | Range Production (lbs/acre/yr) | SRPG | Alfalfa hay Tons | Alfalfa hay Irrigated Tons | Corn Bu | Corn Irrigated Bu | Grain sorghum Bu | Grain sorghum Irrigated Bu | Soybeans Irrigated Bu | Winter wheat Bu |
|-------------------------|---|-------|------------------|-------------|------------------|--------------|--------------------------------|-------------|------------------|----------------------------|-------------|-------------------|------------------|----------------------------|-----------------------|-----------------|
| 8874 | Hord silt loam, sandy substratum, 0 to 1 percent slopes | 23.09 | 72.9% | | IIc | Is | 4192 | 76 | | | 4 | 13 | 2 | 5 | | 3 |
| 8845 | Hall silt loam, sandy substratum, 0 to 1 percent slopes | 8.60 | 27.1% | | I | I | 3800 | 77 | 4 | 6 | 60 | 160 | 75 | 125 | 45 | 40 |
| Weighted Average | | | | | 1.73 | 1.00 | 4085.6 | 76.3 | 1.1 | 1.6 | 19.2 | 52.9 | 21.8 | 37.6 | 12.2 | 13 |

*n: The aggregation method is "Weighted Average using all components"

*c: Using Capabilities Class Dominant Condition Aggregation Method

Soils data provided by USDA and NRCS.