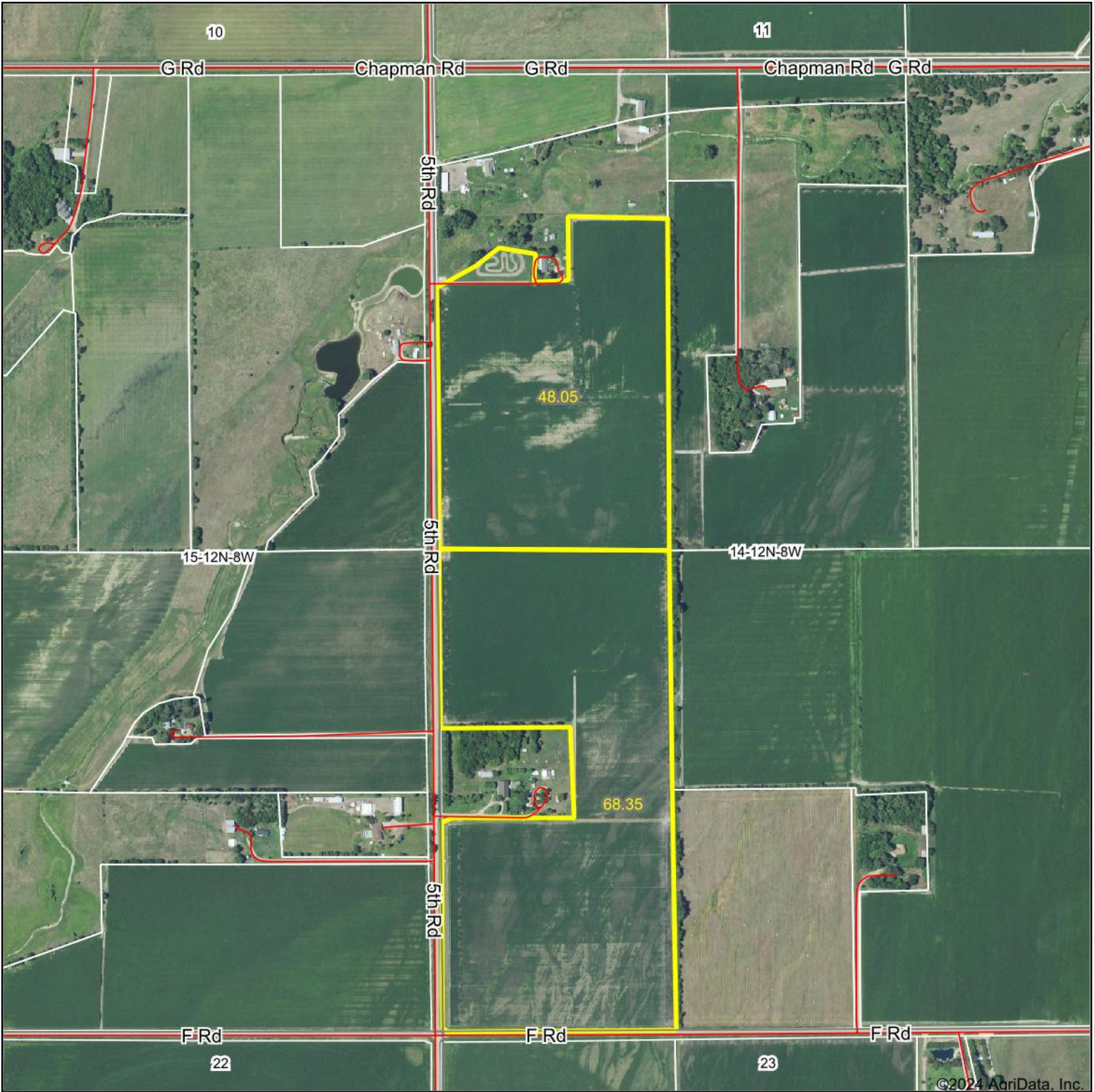


Aerial Map

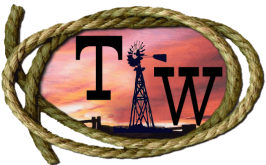


©2024 AgriData, Inc.

Boundary Center: 41° 0' 31.62, -98° 12' 14.03



14-12N-8W
Merrick County
Nebraska



Maps Provided By:



© AgriData, Inc. 2023 www.AgriDataInc.com

1/29/2024

Field borders provided by Farm Service Agency as of 5/21/2008.

Maximum NDVI 2023

Client:

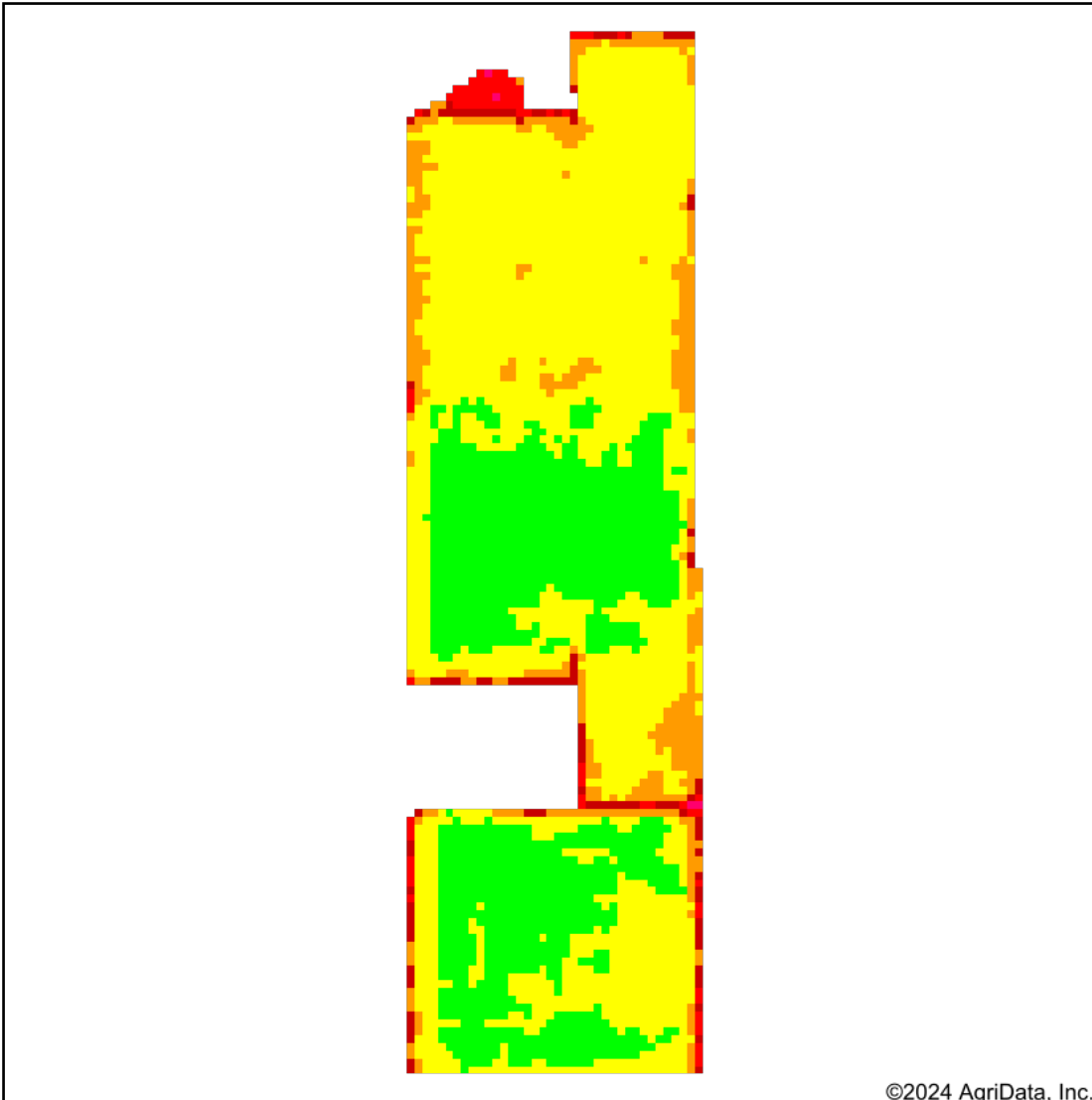
Farm:

Field:

Acres: 116.4

Date: 1/29/2024

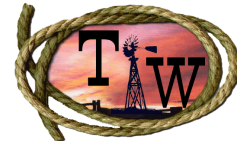
Crop:



Soils Weighted Average

NCCPI Overall: 55.6

Remarks:



©2024 AgriData, Inc.

| Low RELATIVE BIOMASS High | Value | Acres | %Field | NCCPI |
|---------------------------|---------|-------|--------|-------|
| Dark Green | 86 - 99 | | | |
| Green | 81 - 85 | | | |
| Light Green | 76 - 80 | 36.5 | 31.3 | 51.8 |
| Yellow | 71 - 75 | 64.1 | 55.0 | 58.1 |
| Orange | 66 - 70 | 10.9 | 9.4 | 55.2 |
| Red-Orange | 61 - 65 | 2.8 | 2.4 | 50.0 |
| Red | 51 - 60 | 2.0 | 1.8 | 58.8 |
| Pink | 41 - 50 | 0.1 | 0.1 | 70.0 |
| Purple | 21 - 40 | | | |
| Blue | 1 - 20 | | | |
| Dark Blue | 0 - 0 | | | |

Std. Dev: **3.9**

Mean: **73.3**

Max: **79**

Min: **42**

Max NDVI Dates:

Start: 5/1

End: 9/29

Map Center: 41° 0' 31.62, -98° 12' 14.03

State: NE

County: Merrick

Location: 14-12N-8W

Township: Chapman

Elevation (feet)

Min: 1,778.8

Max: 1,783.7

Range: 4.9

Mean: 1,781.2

Std. Dev: .8

Maps Provided By:

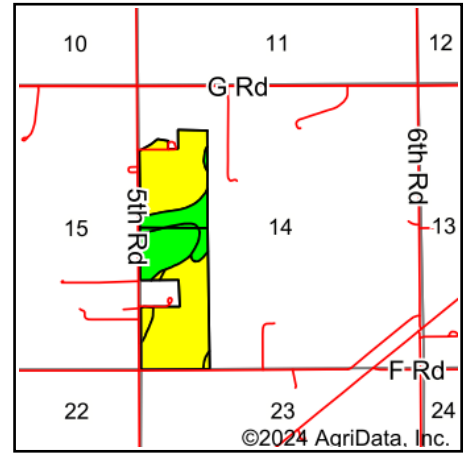
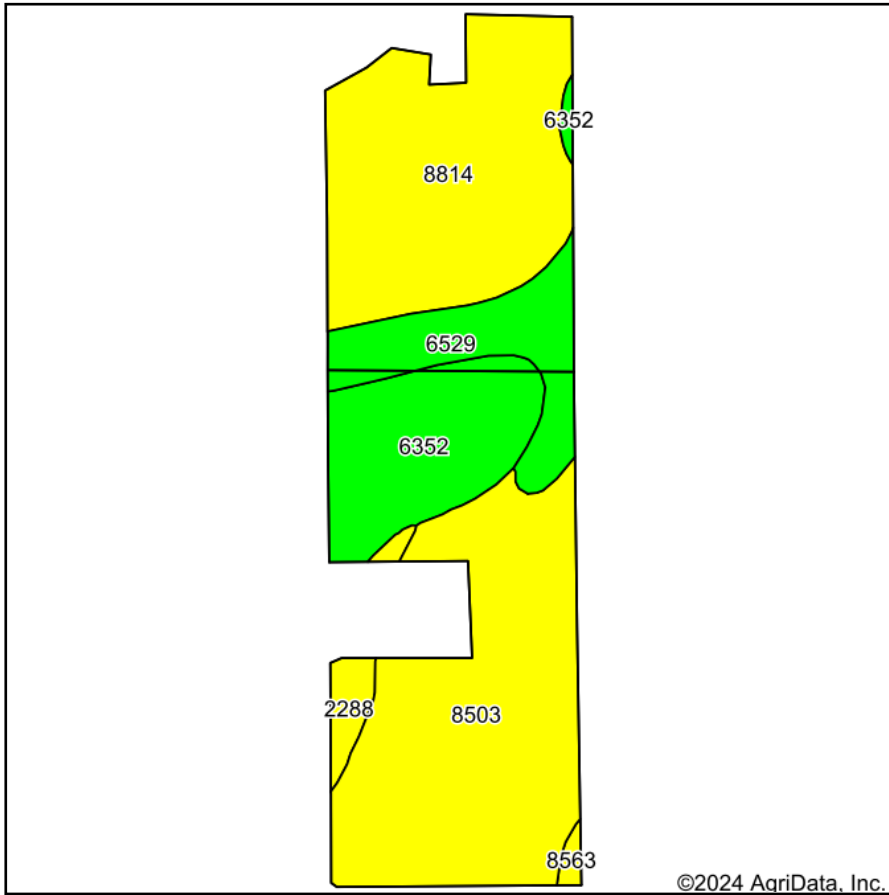


© AgriData, Inc. 2023

www.AgriDataInc.com



Soils Map



State: **Nebraska**
 County: **Merrick**
 Location: **14-12N-8W**
 Township: **Chapman**
 Acres: **116.4**
 Date: **1/29/2024**



Maps Provided By:

 CUSTOMIZED ONLINE MAPPING
 © AgriData, Inc. 2023 www.AgriDataInc.com



Soils data provided by USDA and NRCS.

Area Symbol: NE121, Soil Area Version: 23

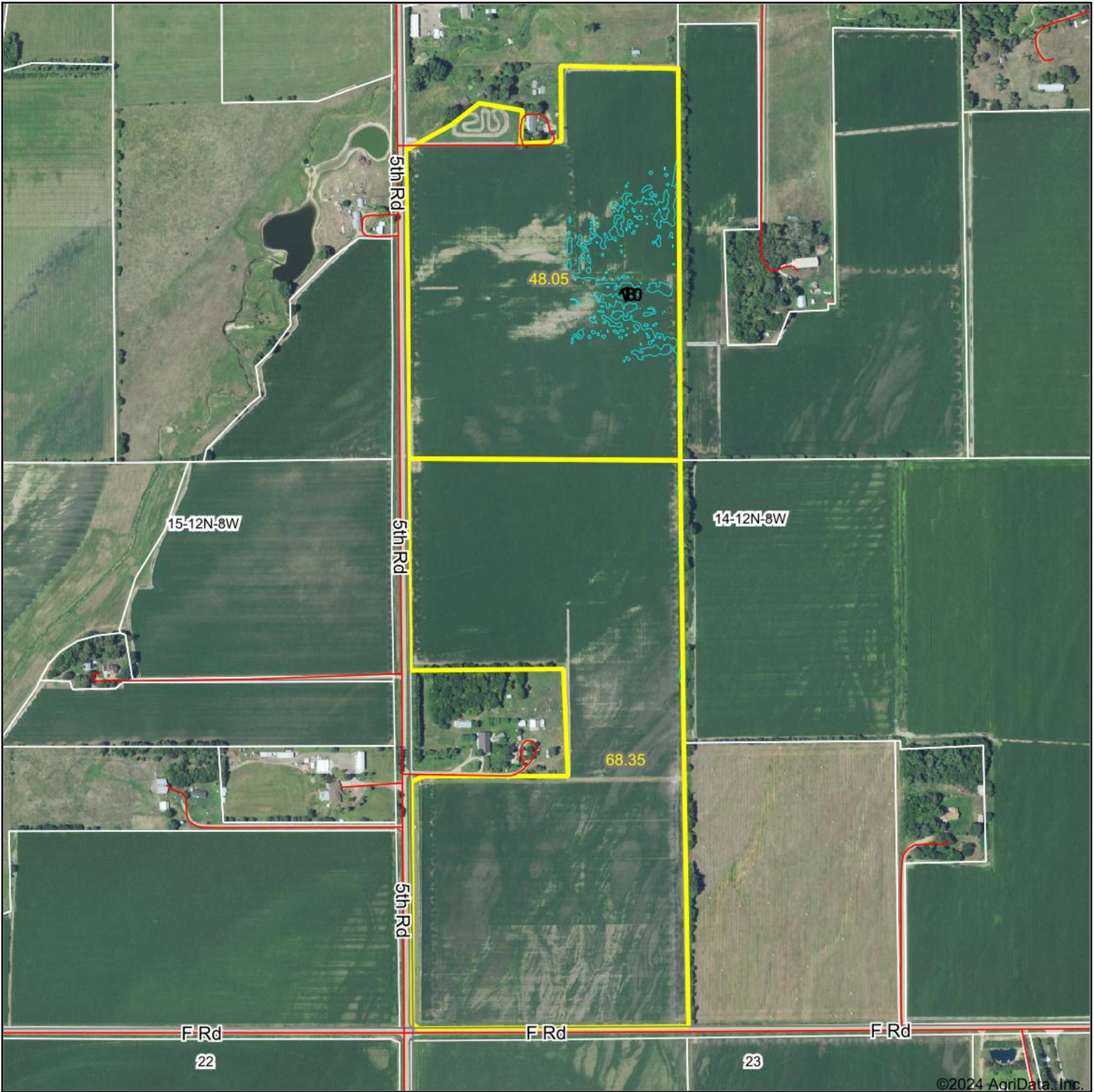
| Code | Soil Description | Acres | Percent of field | SRPG Legend | Non-Irr Class *c | Irr Class *c | Range Production (lbs/acre/yr) | SRPG | Alfalfa hay Tons | Alfalfa hay Irrigated Tons | Corn Bu | Corn Irrigated Bu | Grain sorghum Bu | Grain sorghum Irrigated Bu | Soybeans Irrigated Bu | Winter wheat Bu |
|-------------------------|--|-------|------------------|-------------|------------------|--------------|--------------------------------|-------------|------------------|----------------------------|-------------|-------------------|------------------|----------------------------|-----------------------|-----------------|
| 8503 | Lex loam, occasionally flooded | 43.73 | 37.6% | | IIIw | IIIw | 4851 | 38 | 3 | 6 | 64 | 148 | 74 | 114 | 39 | 33 |
| 8814 | Cozad loam, wet substratum, 0 to 1 percent slopes | 37.32 | 32.1% | | Iw | I | 5247 | 78 | 5 | 6 | 71 | 158 | 65 | 114 | | 38 |
| 6352 | Leshara silt loam, occasionally flooded | 18.98 | 16.3% | | IIw | IIw | 5247 | 65 | 4 | 6 | 74 | 142 | 81 | 119 | 38 | 34 |
| 6529 | Janude sandy loam, very rarely flooded | 12.85 | 11.0% | | Ile | Ile | 3000 | 66 | 3 | 6 | 75 | 154 | 75 | 120 | 42 | 33 |
| 2288 | Wann loam, 0 to 2 percent slopes, occasionally flooded | 2.87 | 2.5% | | IIw | IIw | 5872 | 49 | | | | | | | | |
| 8563 | Platte loam, occasionally flooded | 0.65 | 0.6% | | IVw | IVw | 4640 | 32 | 2 | 3 | 33 | 94 | 52 | 81 | | 19 |
| Weighted Average | | | | | 2.07 | 2.07 | 4862.2 | 58.6 | 3.7 | 5.8 | 67.3 | 146.9 | 70.4 | 112.5 | 25.5 | 33.3 |

*n: The aggregation method is "Weighted Average using all components"

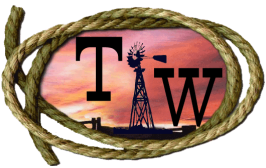
*c: Using Capabilities Class Dominant Condition Aggregation Method

Soils data provided by USDA and NRCS.

Topography Contours

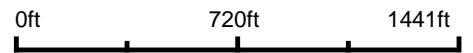


©2024 AgriData, Inc.



Maps Provided By:
surety[®]
 CUSTOMIZED ONLINE MAPPING
 © AgriData, Inc. 2023 www.AgriDataInc.com

Source: USGS 3 meter dem
Interval(ft): 4.0
Min: 1,778.8
Max: 1,783.7
Range: 4.9
Average: 1,781.2
Standard Deviation: 0.75 ft



1/29/2024

14-12N-8W
Merrick County
Nebraska

Boundary Center: 41° 0' 31.62, -98° 12' 14.03

Field borders provided by Farm Service Agency as of 5/21/2008.