

NDVI - 7/11/2021

Client:

Farm:

Field:

Acres: 148.55

Date: 10/10/2022

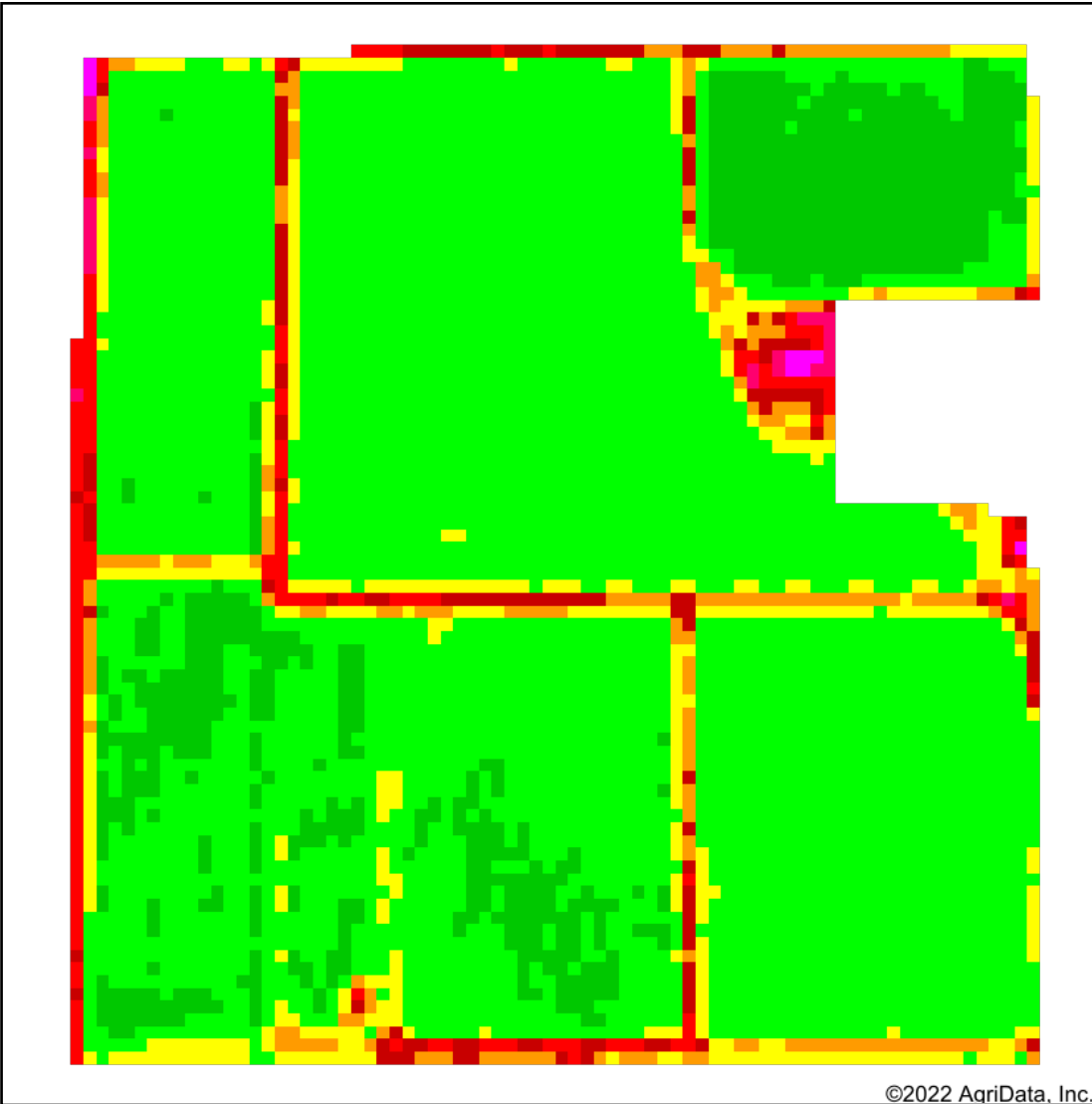
Crop:

*USDA CropScope

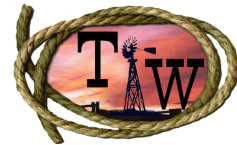
Soils Weighted Average

NCCPI Overall: 74.8

Remarks:



©2022 AgriData, Inc.



	Value	Acres	%Field	NCCPI
Low RELATIVE BIOMASS High	86 - 99			
	81 - 85	19.2	12.9	75.0
	76 - 80	104.1	70.0	75.0
	71 - 75	10.9	7.3	74.2
	66 - 70	5.7	3.8	74.0
	61 - 65	3.7	2.5	74.3
	51 - 60	4.1	2.8	73.6
	41 - 50	0.6	0.4	75.0
	21 - 40	0.2	0.2	71.6
	1 - 20			
0 - 0				

Std. Dev: **5.69**

Mean: **77.09**

Max: **82**

Min: **32**

% of Max NDVI:

85.4

Elevation (feet)

Min: 1,890.2

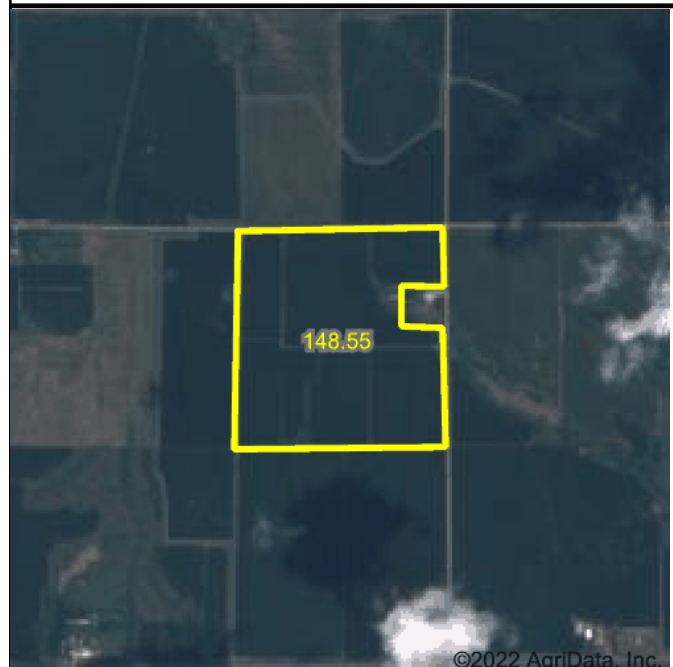
Max: 1,919.3

Range: 29.1

Mean: 1,911.8

Std. Dev: 4.2

Use Image below to check for clouds and shadows
(completely white = 100% cloud cover)



©2022 AgriData, Inc.

Map Center: 41° 13' 47.86, -98° 30' 46.2

State: NE

County: Howard

Location: 31-15N-10W

Township: St. Paul

Maps Provided By:



© AgriData, Inc. 2021

www.AgriDataInc.com

