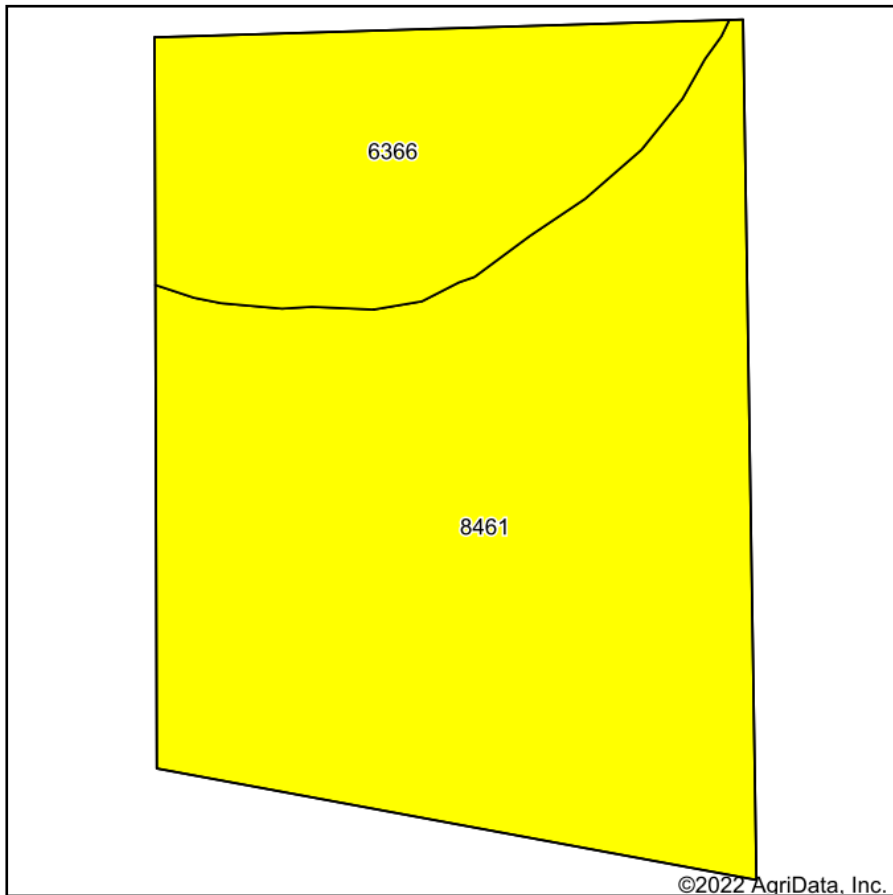
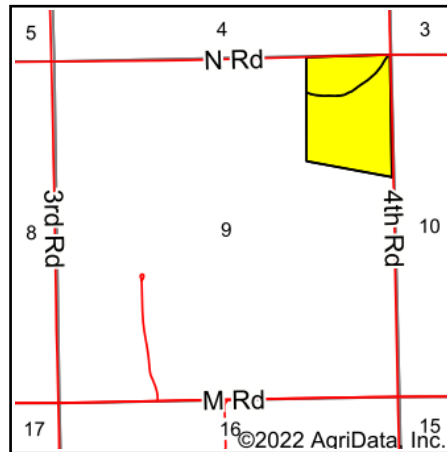


# Soils Map



Soils data provided by USDA and NRCS.



State: **Nebraska**  
 County: **Merrick**  
 Location: **9-13N-8W**  
 Township: **Prairie Creek**  
 Acres: **52.74**  
 Date: **11/1/2022**



Maps Provided By:



Area Symbol: NE121, Soil Area Version: 21															
Code	Soil Description	Acres	Percent of field	SRPG Legend	Non-Irr Class *c	Irr Class *c	SRPG	Alfalfa hay Tons	Alfalfa hay Irrigated Tons	Corn Bu	Corn Irrigated Bu	Grain sorghum Bu	Grain sorghum Irrigated Bu	Winter wheat Bu	*n NCCPI Soybeans
8461	Gayville variant silt loam, rarely flooded	38.93	73.8%		IVs	IVs	47	2	4	35	82	40	79	24	34
6366	Obert silt loam, occasionally flooded	13.81	26.2%		Vw		48								42
<b>Weighted Average</b>					<b>4.26</b>	<b>*-</b>	<b>47.3</b>	<b>1.5</b>	<b>3</b>	<b>25.8</b>	<b>60.5</b>	<b>29.5</b>	<b>58.3</b>	<b>17.7</b>	<b>*n 36.1</b>

\*n: The aggregation method is "Weighted Average using all components"

\*c: Using Capabilities Class Dominant Condition Aggregation Method

\*- Irr Class weighted average cannot be calculated on the current soils data due to missing data.

Soils data provided by USDA and NRCS.