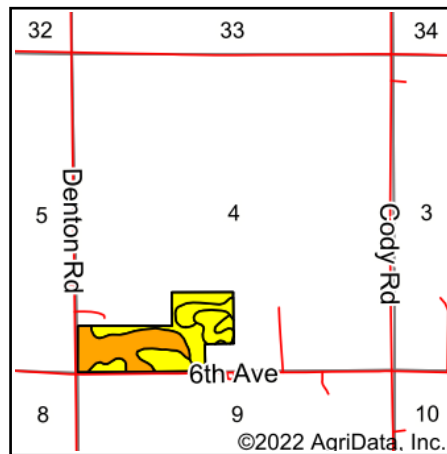
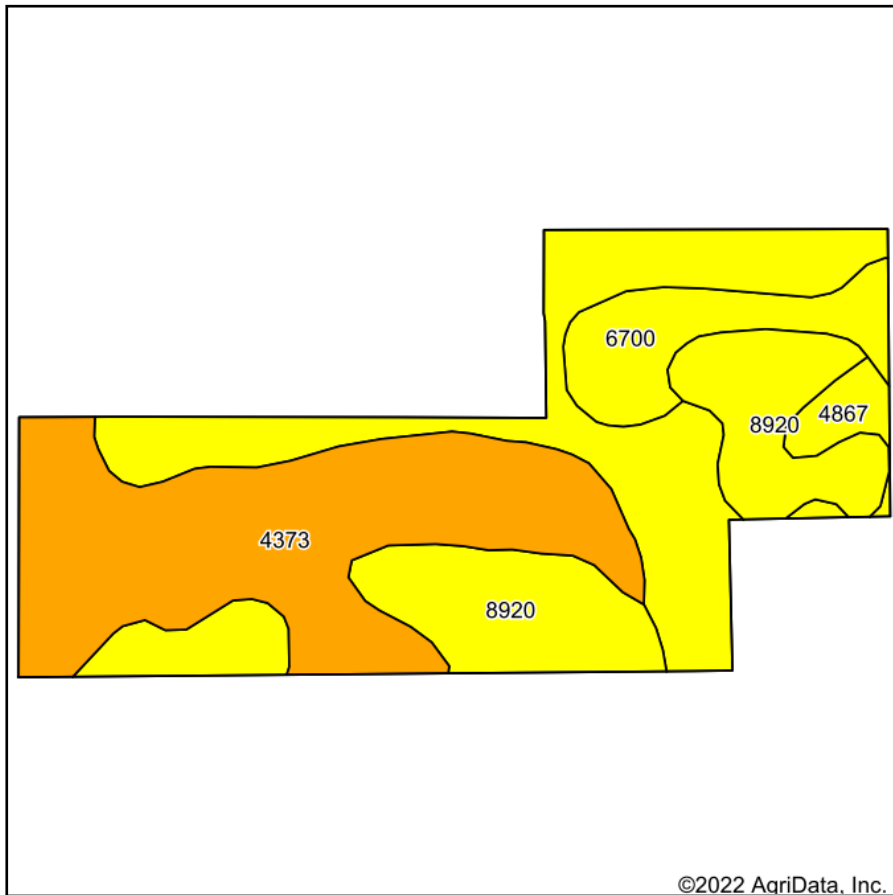
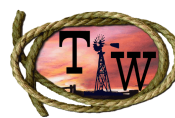


Soils Map



State: **Nebraska**
 County: **Howard**
 Location: **4-13N-9W**
 Township: **St. Libory**
 Acres: **52.75**
 Date: **11/7/2022**



Maps Provided By:

 CUSTOMIZED ONLINE MAPPING
 © AgriData, Inc. 2021 www.AgriDataInc.com



Soils data provided by USDA and NRCS.

Area Symbol: NE093, Soil Area Version: 20

Code	Soil Description	Acres	Percent of field	SRPG Legend	Non-Irr Class *c	Irr Class *c	SRPG	Alfalfa hay Tons	Alfalfa hay Irrigated Tons	Corn Bu	Corn Irrigated Bu	Grain sorghum Bu	Grain sorghum Irrigated Bu	Soybeans Bu	Soybeans Irrigated Bu	Winter wheat Bu	*n Soy
4373	Libory-Boelus loamy fine sands	19.49	36.9%		IIIe	IIIe	56	4	6	44	120	46	110			36	
4867	Valentine-Libory complex, 0 to 9 percent slopes	17.24	32.7%		VIe	IVe	39	2	4	36	101			14	40		
8920	Rusco silt loam, occasionally flooded	11.19	21.2%		IIw	IIw	35	3	5	37	137	44	108			34	
6700	Thurman loamy fine sand, 0 to 2 percent slopes	4.83	9.2%		IIIe	IIIe	32	2	4	32	90	35	88			31	
Weighted Average					3.77	3.11	43.8	3	5	38.8	114.6	29.5	71.6	4.6	13.1	23.4	

*n: The aggregation method is "Weighted Average using all components"

*c: Using Capabilities Class Dominant Condition Aggregation Method

Soils data provided by USDA and NRCS.